



Business buildings

Outdoor signage

Outdoor signage includes all positions of signage: information and direction signage in the form of roadside signs marking the way to the branch bank, and mandatory (necessary) notifications on the front door. Key visual elements include the symbol, signboard above the bank, signboard for the ATM, and signage for larger glass surfaces.



NLB symbol for external marking made of **stainless steel**

NLB Symbol for external marking made of stainless steel.

NLB Group branch offices have frontal signage of the full member's symbol. The typographic part is constructed of polished stainless steel. The circle of the logo is made from white PVC material, which is pasted over with the prescribed foil (according to the plan) (for colour definition see Basic visual elements / Colour scheme) with middle cutted out (sticking the foil twice). The circumference of the circle is manufactured from polished stainless steel.

The member's symbol is designed in two sizes.

Variation A:

NLB symbol height (symbol of a Group member is in reasonable proportion): 70 cm, NLB symbol depth: 10 cm

Variation B:

NLB symbol height (symbol of a Group member is in reasonable proportion): 50 cm, NLB symbol depth: 8 cm.

These 3D symbols may be lit from behind, with custom backlight for each individual letter and circle, or from the front with lights distributed across the whole width of the symbol and at least 1.5 cm away from the symbol.



NLB symbol for external marking made of **PVC materials**

NLB Group branch offices have frontal signage of the full member's symbol, NLB Signboards stay the same. The symbol may be constructed of suitably thick and colour PVC materials (for colour definition see Basic visual elements / Colour scheme). The circle of the symbol is pasted over (according to the plan) with the prescribed foil (for colour definition see Basic visual elements / Colour scheme) with the middle cut out (for pasting the foil twice).

Typographic part could be made from an appropriate thick and colour PVC materials (for colour definition see Basic visual elements / Colour scheme). Sign has a white outline.

Sign of a NLB Group member is made in two sizes:

Variation A:

NLB symbol height (symbol of a Group member is in reasonable proportion): 70 cm NLB symbol depth: 10 cm

Variation B:

NLB symbol height (symbol of a Group member is in reasonable proportion): 50 cm NLB symbol depth: 8 cm.

This 3D signs can be lighted from behind, with lights arranged for each letter individually (Back Light) or from front with lights arranged in the whole line of the symbol, away for the sign a lease 1.5 cm.



Examples

Version A:

NLB Group branch offices have frontal signage of the full member's symbol. The typographic part is constructed of polished stainless steel. The circle of the logo is made from white PVC material, which is pasted over with the prescribed foil (according to the plan) (for colour definition see Basic visual elements / Colour scheme) with middle cutted out (sticking the foil twice). The circumference of the circle is manufactured from polished stainless steel.

Version B:

Branch offices may also be frontally market with a full symbol in PVC with a padded stainless steel strip through the entire width of the premises.

Version C:

NLB symbol in negative variation.

The console is made of white plexi glass and lit from the inside. In the case of frontal attachment onto the façade, the rear end is metal. The edge of the signboard is made of stainless steel.

Console depth is 13 cm, the console is finished in a silver rim, which is 2 cm wide.

External rim of the signboard is made of stainless still with an edge, which is 0.6 / 0.7 cm wide.

It is attached with the rear (back) surface, directly onto the facade.

Signboard is made of a white Plexiglas and highlighted by a neon light from inside. When fixed frontally on a façade the back side is made from metal.

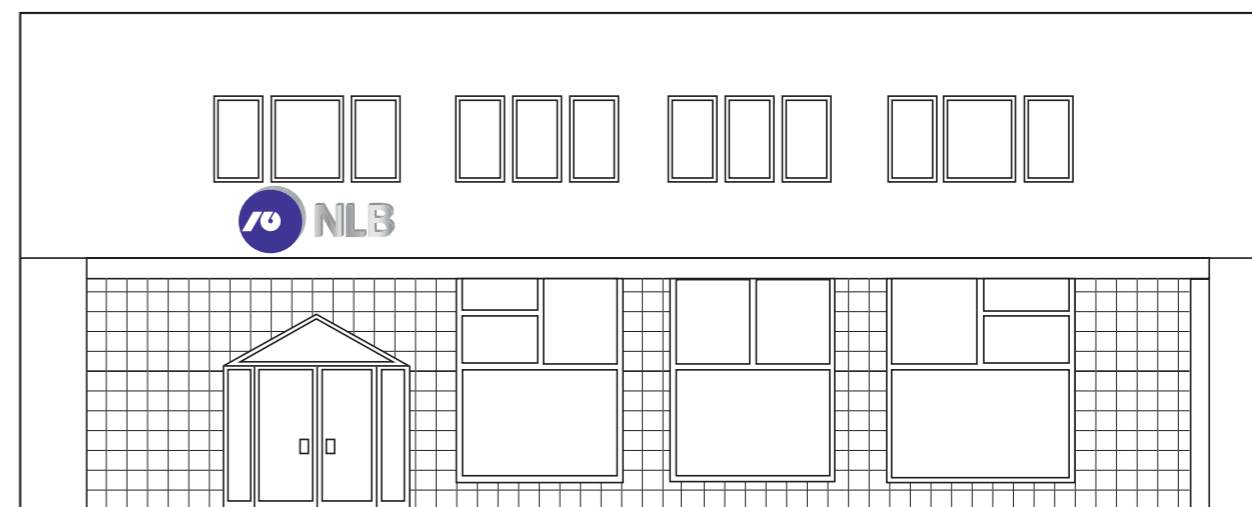
Width of a console: 13 cm. Console has a white edge of 2 cm in width. Outside edge of a signboard is made of a stainless steel in 0.6 / 0.7 cm width. Its backside is fixed directly to the façade.

Positions of individual signs on the façade are set individually, adhering to the following rules:

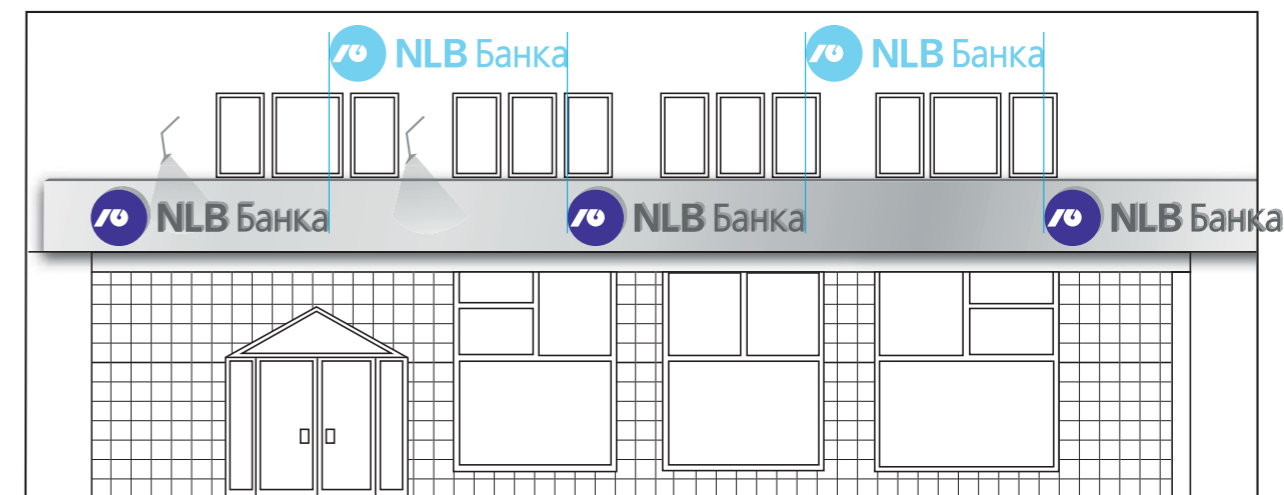
- The NLB and the ATM signboard have to be placed a distance of at least 2.5 m from each other.
- One side of the building can have only one NLB and ATM signboard.

The exception can be in extremely long façades with entrances that are spaced very widely apart and buildings with more than one ATM that are more than 6 m apart from each other. In such cases, one of the signboards may be used twice.

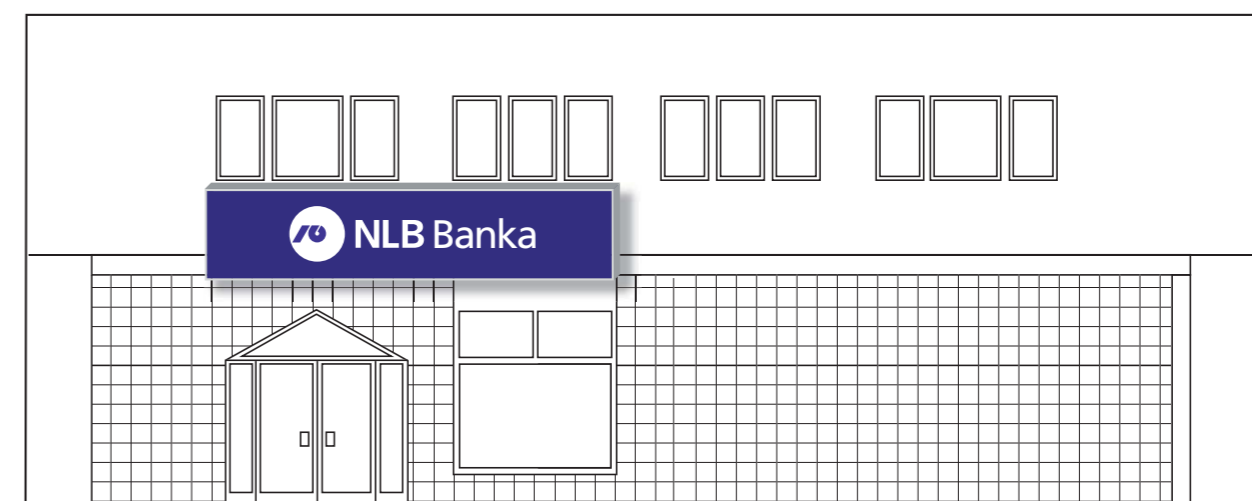
Variation A



Variation B



Variation C



NLB and ATM Signboard

The NLB signboard takes the basic form of the “cloud”. In normal circumstances it is attached in one of the following ways:

- With the shorter side (the one not ending in a circle) directly fixed to the façade,
- with the upper side directly fixed to the ceiling (when fixing it under projecting roofs, arcades, outer passages and similar).

In exceptional cases we can also mount it in the following ways:

- With the upper side on steel brackets suspended from the ceiling when the ceiling is too high,
- frontally with the back surface directly fixed to the façade.

The signboard can be mounted this way only when there is an element nearby on the façade upon which we can “lean” the shorter side (the one not ending in a circle), so that it touches this element.

The word ATM is written out in the local language.

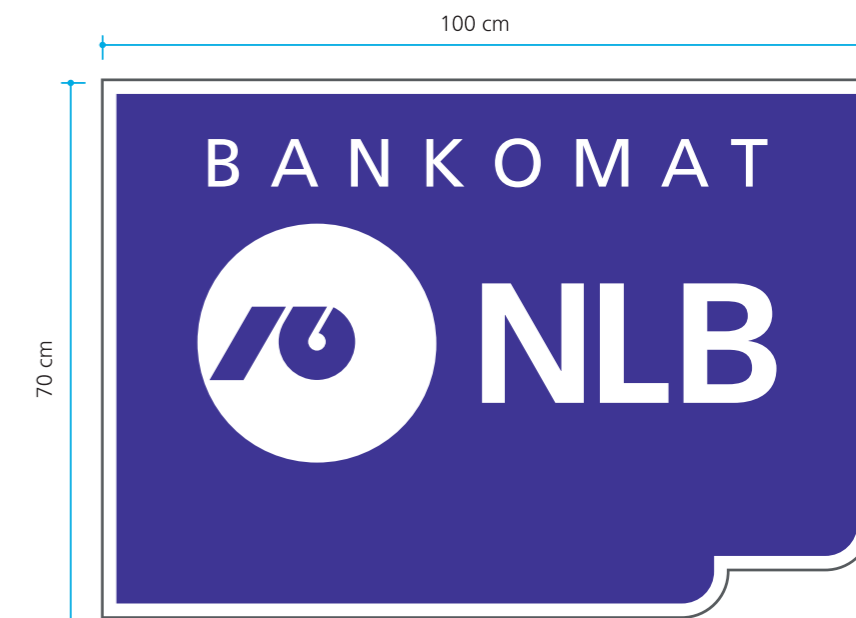
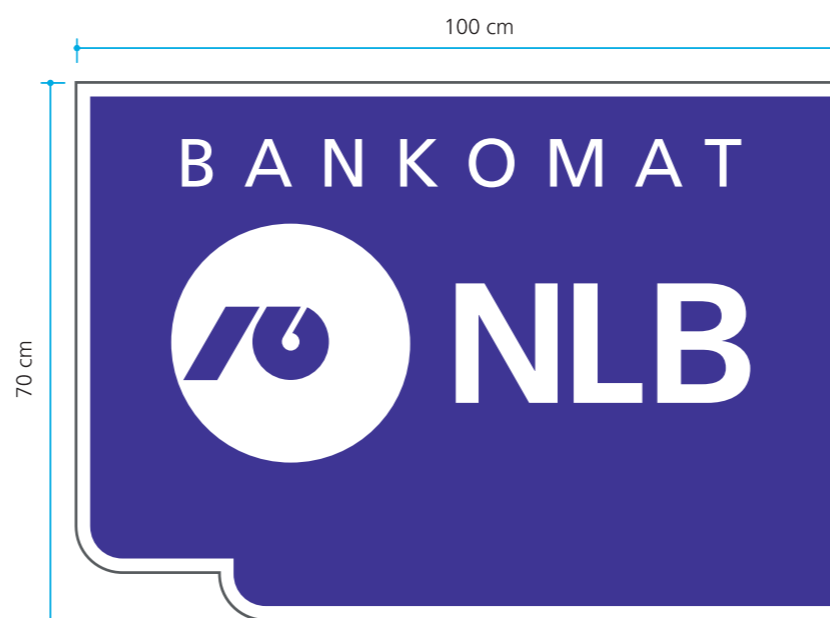
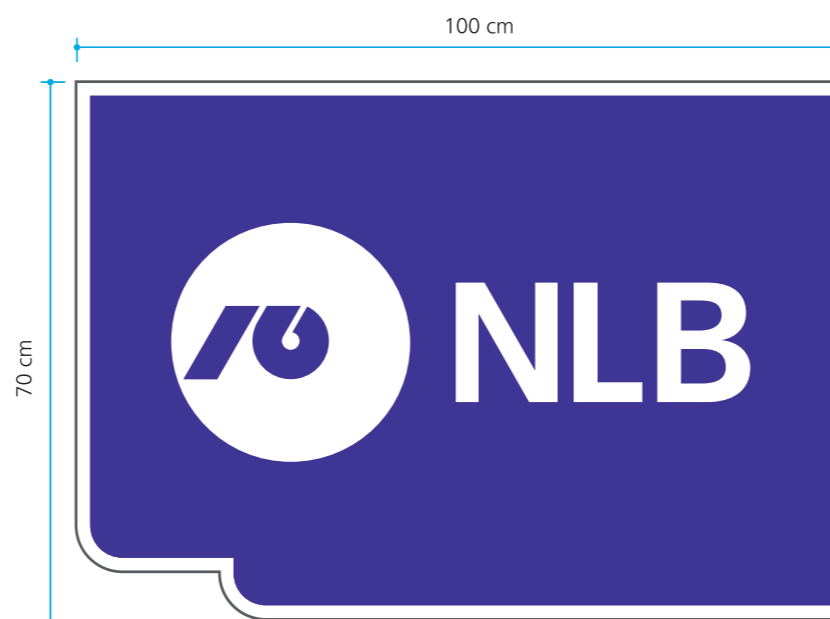
Materials

The signboard is designed using white Plexiglas, illuminated from the inside with neon lighting. When it is frontally mounted to the façade, the backside is made of metal. The edge of the signboard is made of 0.6/0.7 cm thick polished stainless steel. The Plexiglass is pasted over (according to the plan) with the prescribed foil (for colour definition see Basic visual elements / Colour scheme) with the middle cut out (for pasting the foil twice). From stainless steel with 0.6/0.7 cm wide edges.

The depth of the signboard: 13 cm.

The signboard is bordered with a white edge 2 cm wide.

The edge of the signboard is stainless steel: 0.6 / 0.7 cm.



Marking of buildings, boards

On façades protected by preservation legislature, we may only attach the signboards with the NLB symbol and the ATM sign. The general rule is that, in such cases, the glass should display the NLB symbol or the symbol of a member.



Larger glass surfaces

Glass surfaces are covered with a stripe pattern, which is technically implemented in different ways, regarding the needs of the business unit (ambient, facade, security aspect and shading are taken into consideration).

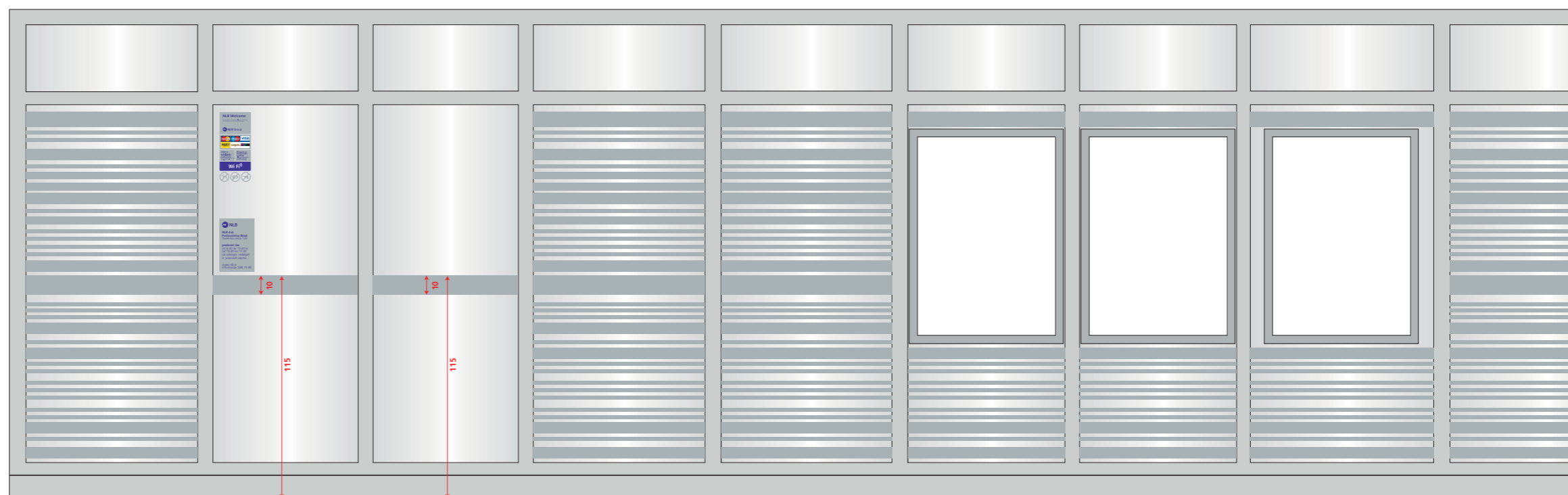
Materials for implementation:

- sanded foil,
- silver foil,
- white foil.

Stripe pattern must not be deformed (enlarged or reduced), however, depending on the surface size and fixed elements (poster spaces, ATMs), stripe pattern can be added /multiplied and has to continue as designed.

If the glass surfaces don't have poster areas, then use the area for current marketing communication on information.

Material: print on perforated foil.

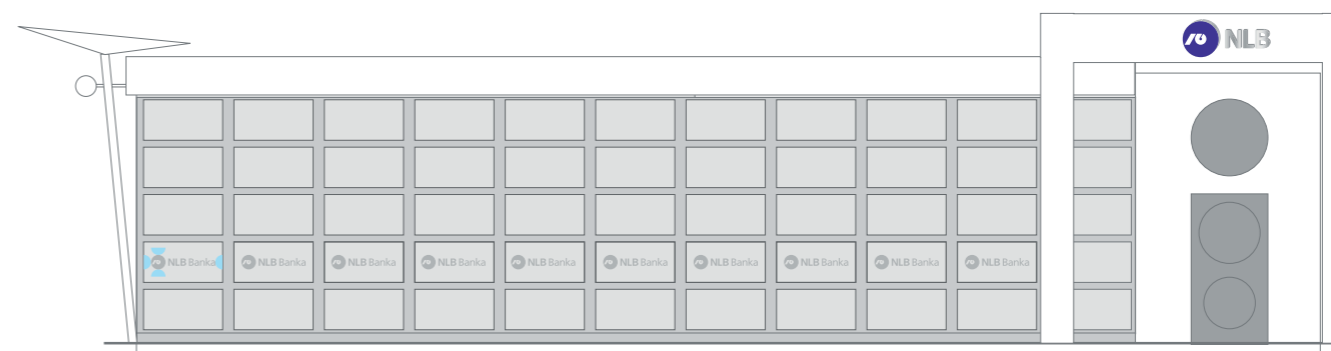
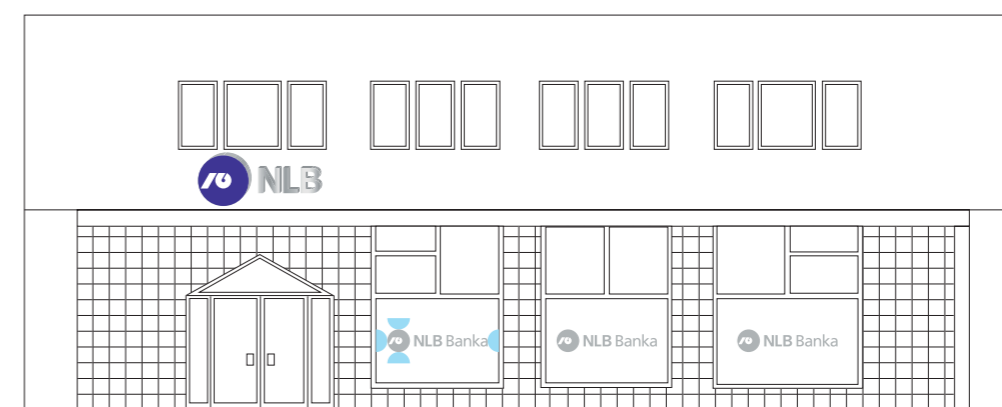


Smaller glass surfaces

Smaller glass surfaces are covered with the pattern of the symbol, which is technically implemented in different ways (ambient, facade, security aspect and shading are taken into consideration).

Materials for implementation:

- sanded foil,
- silver foil,
- white foil.



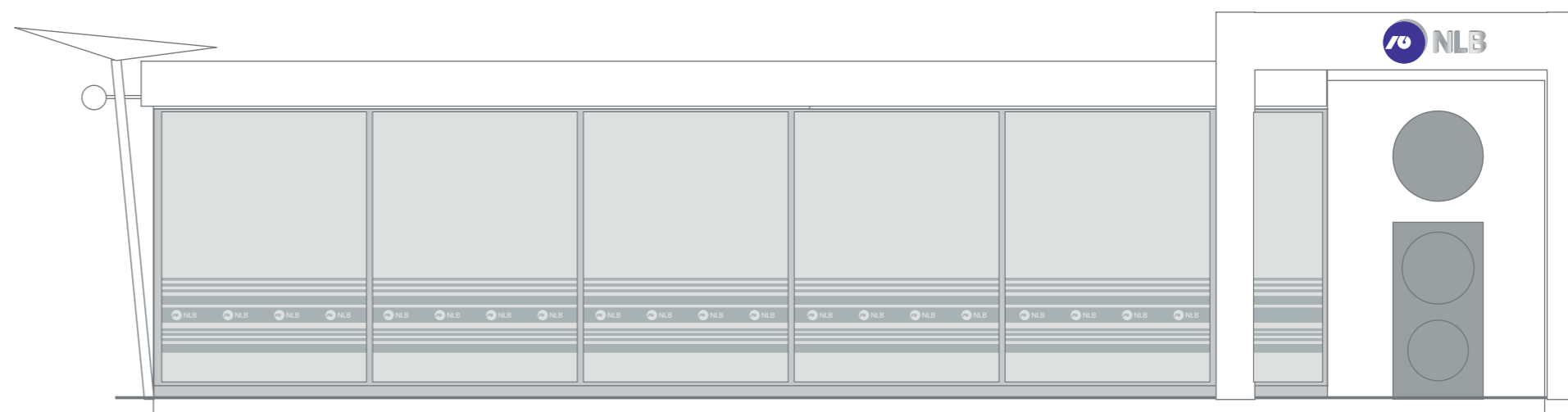
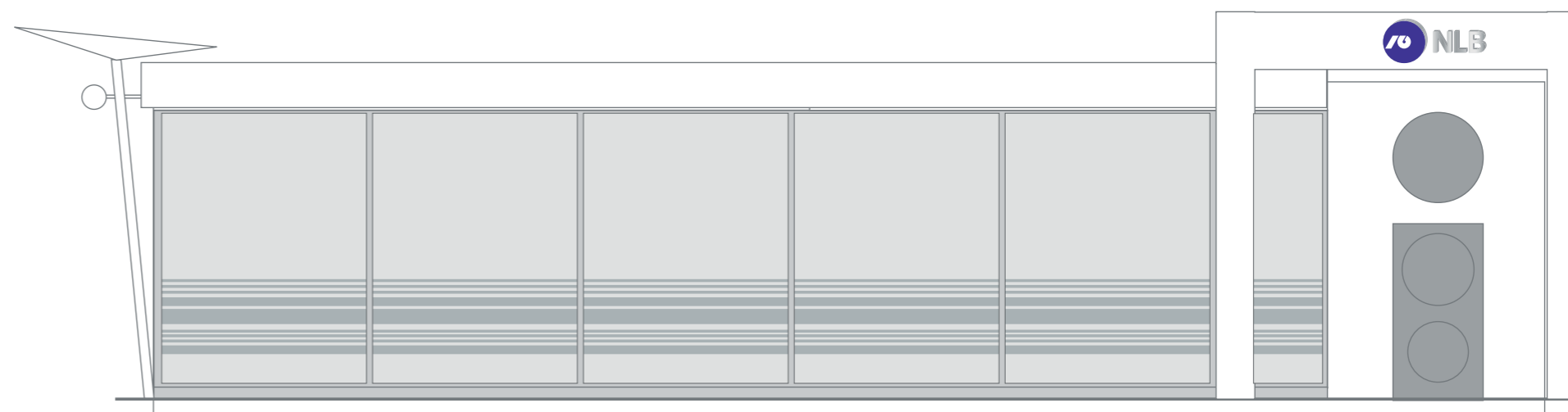
Reflex glass

Reflex glass is covered with:

- line pattern,
- combination of line and symbol.

Materials are chosen differently, taking the needs of the business unit into consideration (ambient, facade):

- sanded foil,
- silver foil.

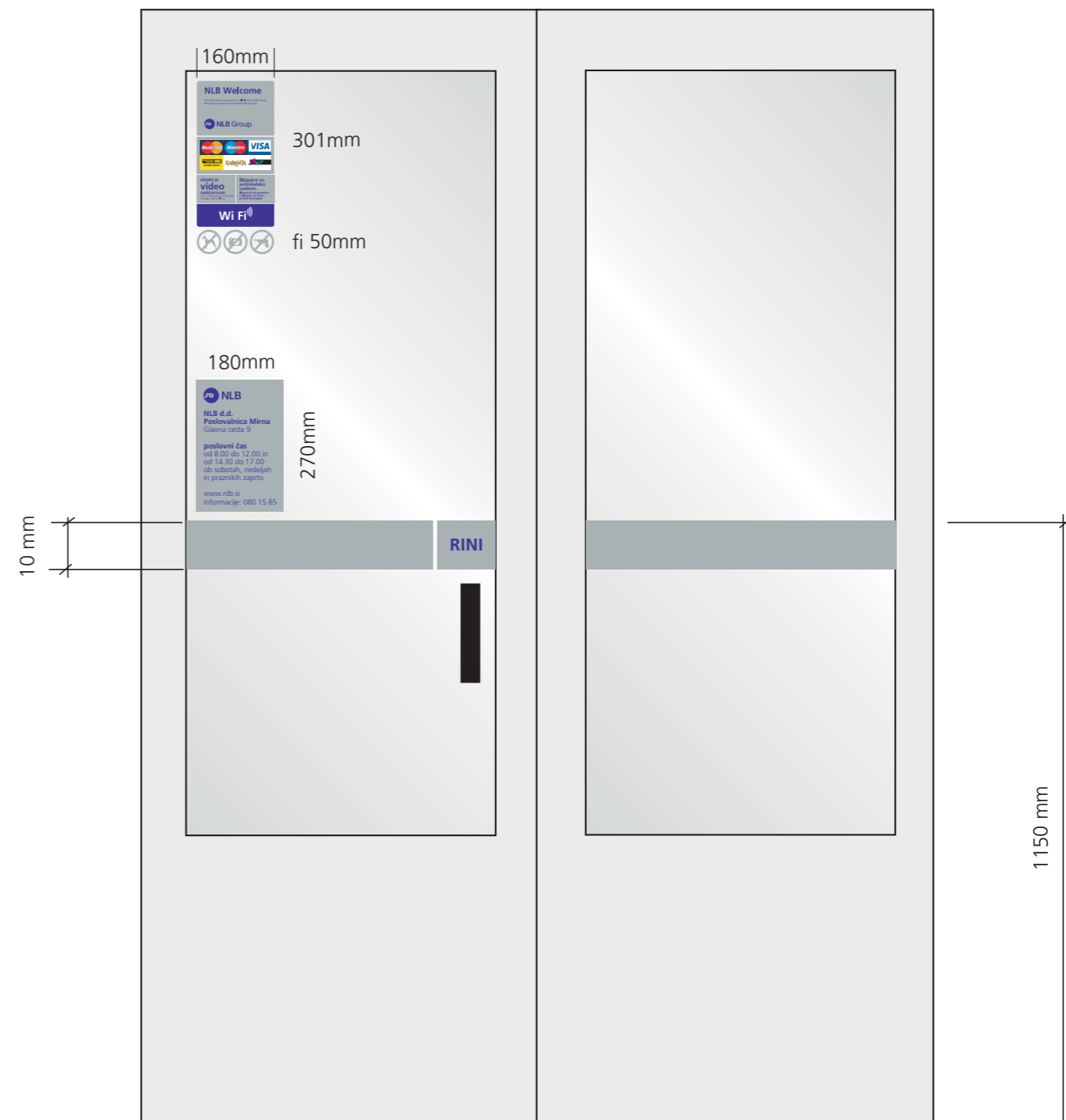
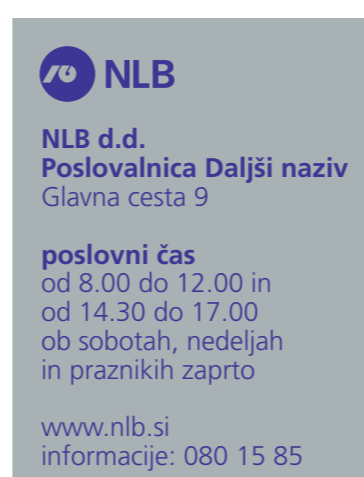
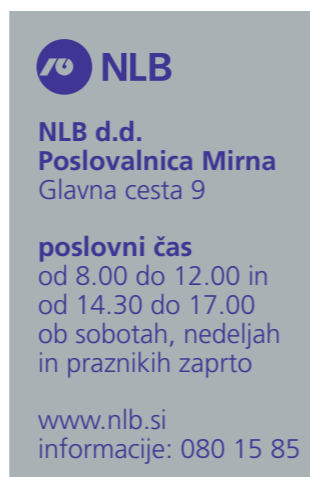


Entrance door

The following stickers are obligatory on the entrance doors (valid only for Slovenia):

- the Bank of Slovenia sticker (original, received from the Bank of Slovenia)
- NLB Welcome, cards, warnings and wi fi (print on silver surface, one piece sticker, lines in between are transparent)
- prohibitions (cut-out from silver foil)
- sticker with address and opening times (print on silver surface)

The stickers are one sided and applied on the inside. They are 20 mm away from the edge of the central line. In the case, where the doorknob is on the left side of the door, the stickers are aligned to the right and applied to the right side of the door.



Equipment of ATMs

Light surfaces on ATMs have more than 15 different dimensions. Sticker for light surfaces on ATMs comes in one size, which is adjusted / cut so that it is even on the left and the right, as well as top and bottom from the sign, in terms of spacing (central alignment of sign).

For ATMs that do not have their own lighting, we cut the sticker in a way that, in the lower part, the ATM is lit as well.

Implementation:

We print the sign at the centre of the sticker in negative. It is printed on white foil.

The ATMs also enable additional services, which are listed on the board above the ATM. The boards are made of aluminium; the text is printed directly on the board. The width is always the same (width of the most common ATM).

- Plačilo položnice
- Polog gotovine



Kontaktni center: 01 477 20 00.
Bankomat je tehnično varovan.

Kontaktni center: 01 477 20 00.
Objekt je video nadzorovan.

Plate 90 x 20 mm in size. Engraved.
Glued directly onto the ATM.

Signage columns

The signage columns (totems) are used in locations where larger vacant lots are located in front of the buildings. Signage columns are identification marks and are not used for directional purposes. NLB uses two different styles for marking, which differ in logo size. If there are several Group members located in one building, then this is displayed with secondary information.

Size variations:

Variant A

300 x 100 cm

The depth of the letters and the logo: 2 cm

Variant B:

500 x 167 cm

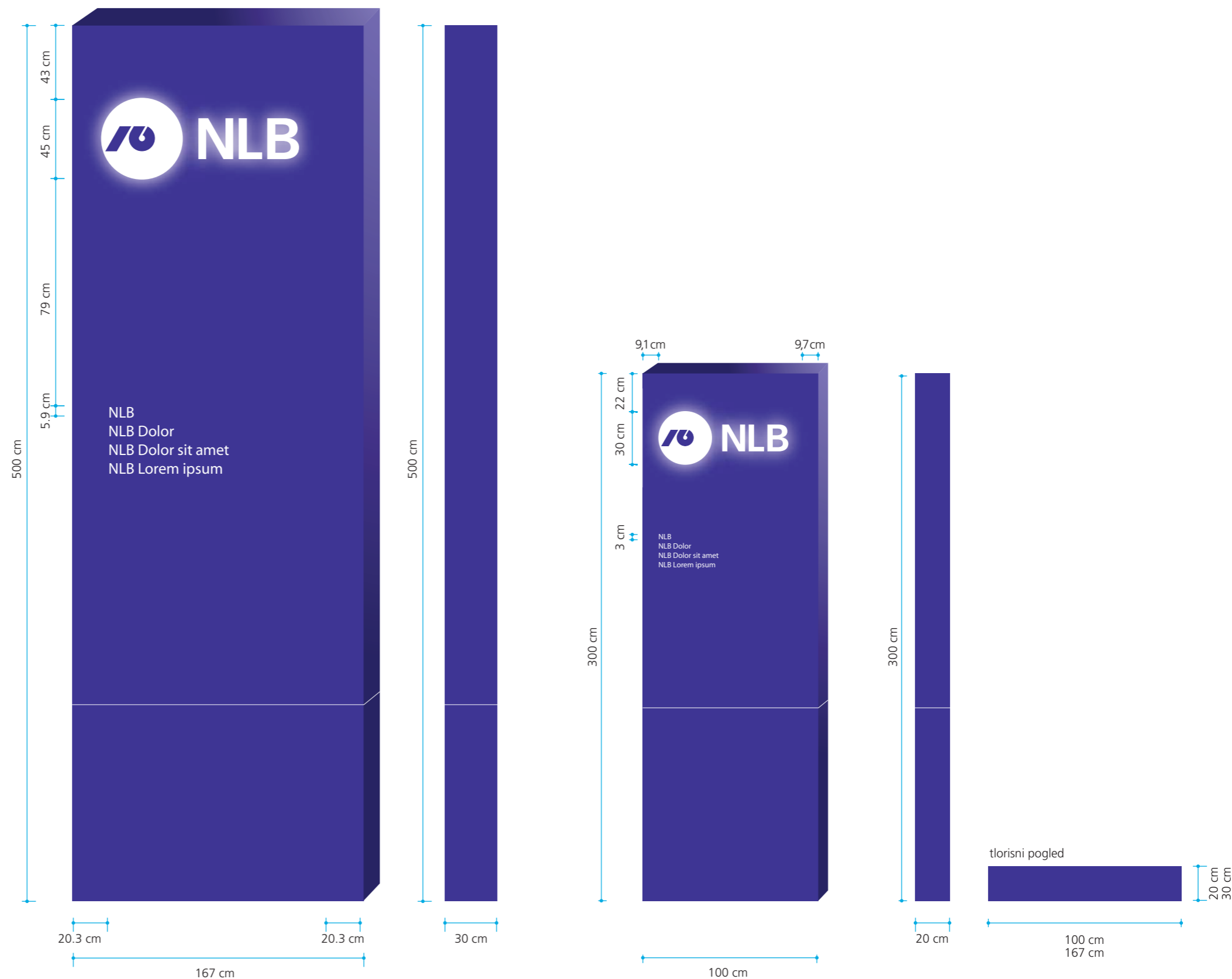
The depth of the letters and the logo: 2 cm

Materials

The totem is manufactured from A1 sheet metal and colour (RAL 2902035). A NLB logo is mechanically carved into the totem and it is lined with a white Plexiglas plate, which has a 20 mm transparent Plexiglas plate glued on it. The exterior of the NLB symbol is pasted over with foil (a MACal 9728-00 white TL (translucent) foil and two layers of MACal 9738-02 blue TL foil for the sign) that has transparent sides, which allow for night lighting from the interior of the totem using neon sticks. The totem is lighted with neon sticks.

The secondary information (texts) are carved from the MACal 9829-00 foil and glued to the metal.

The totem is 3 or 5 m tall. The bottom part in the height of 1 meter is removable and can be replaced due to faster wear and tear. It has to be possible to open the totem from the sides for easier maintenance.



External flags

The background of external flags is NLB blue. They are of different dimensions. The NLB symbol appears in the bottom part of the flag, within the prescribed minimum protection zone.

The sign itself may be positioned anywhere on the flag.

Fibreglass columns with a revolving crossbar are used. The flag post may be 8 or 10 meters tall. The flags have to be hanged at least 3 m above ground.



Information and direction board

Outdoor informative and orientation boards are mainly positioned in front of exits from the main street (if the board is far from the exit, we add the distance information), in front of parking lots and business centres with several buildings. With regard to information, the signs can be constructed modularly (fields can be added).

System: Spandex SLATZ, white colour

Letter application: grey self-adhesive foil

